

HEART OF ENGLAND DOG SHOWS ARE PROUD TO PRESENT

**A COUNTRYSIDE THEMED COMPANION DOG SHOW**

(Held under Kennel Club Regulations)

AT HELLIDON VILLAGE FETE, IN THE FIELD OPPOSITE THE RED LION PUB,  
STOCKWELL LANE, HELLIDON, NEAR DAVENTRY, NORTHANTS NN11 6LG

**ON SATURDAY, 28<sup>TH</sup> JUNE 2014**

PROCEEDS FOR THE ST JOHN THE BAPTIST HELLIDON FABRIC & ORGAN TRUST



PRIZES KINDLY DONATED BY

**DOG SHOW ENTRIES £1.50 PER CLASS**

REGISTRATION FROM 12:00 NOON - JUDGING FROM 1:00 PM

**JUDGE - MIKKI DEWIS (OZASHI AKITAS)**

**PAW PEDIGREE CLASSES PAW**

1. AV PUPPY (6-12 MONTHS)
2. AV SPORTING
3. AV NON SPORTING PAW
4. AV OPEN

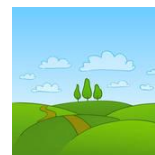
**ALL UNBEATEN DOGS WILL THEN GO FORWARD FOR  
BEST IN SHOW, RESERVE BEST IN SHOW & BEST PUPPY IN SHOW**

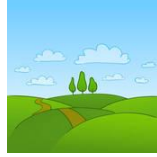
**NOVELTY CLASSES - JUDGING WILL FOLLOW PEDIGREE BEST IN SHOW**

- |                                     |   |
|-------------------------------------|---|
| 5. CUTEST PUPPY (6-12 MONTHS)       | 14. LONG COATED DOG   |
| 6. VETERAN (7 YEARS & OVER)         | 15. SHORT COATED DOG  |
| 7. CROSSBREED                       | 16. 6 LEGS  |
| 8. HANDSOME DOG                     | 17. RESCUE/REHOMED DOG  |
| 9. PRETTY BITCH                     | 18. MOVEMENT  |
| 10. FANCY DRESS (COUNTRYSIDE THEME) | 19. DOG & HANDLER MOST ALIKE  |
| 11. APPEALING EYES                  | 20. JUDGE'S CHOICE  |
| 12. WAGGY TAIL                      | 21. STEWARD'S CHOICE*   |
| 13. BEST CONDITION                  | 22. DOG NOT HAVING WON A 1 <sup>ST</sup> PLACE<br>TODAY (PAY IN THE RING) |

\*CDC Class - You must include your dog's CDC Membership Number on the entry form

**ALL FIRST PLACED NOVELTY WINNERS WILL THEN GO FORWARD FOR BEST NOVELTY IN  
SHOW & RESERVE BEST NOVELTY IN SHOW**





## CONDITIONS FOR ENTERING THE COMPANION DOG SHOW:

Challenge Certificate (or any award that counts towards the title of champion under the rules of any governing body recognised by the Kennel Club), Reserve Challenge Certificate or Junior Warrant winners are not eligible for entry in pedigree classes at Companion Dog Shows.

Jack Russell Terriers are not eligible for pedigree classes (except for Parson Russell Terriers).

Puppies under 6 months old are not eligible for exhibition at this show.

Please do not bring bitches in season to this show.

Dogs must be kept on leads at all times unless otherwise instructed.

Children must be supervised by an adult at all times, the adult being responsible for the child's actions.

Please make sure that no dog is brought to the show which has contracted or has been knowingly exposed to any infectious or contagious disease during the 21 days prior to the show, or is suffering from a condition which adversely affects its health or welfare.

### DOGS IN CARS ON HOT DAYS:

**WARNING - IF YOUR DOG IS FOUND TO BE AT RISK, FORCIBLE ENTRY TO YOUR VEHICLE MAY BE NECESSARY WITHOUT LIABILITY FOR ANY DAMAGE CAUSED.**  
Full guidelines regarding DOGS IN CARS ON HOT DAYS can be found on our website [www.heartofenglanddogshows.co.uk](http://www.heartofenglanddogshows.co.uk).

FOR ALL DOG SHOW ENQUIRIES CONTACT BRIAN - 07577 463560 - [brian@heartofenglanddogshows.co.uk](mailto:brian@heartofenglanddogshows.co.uk)

